

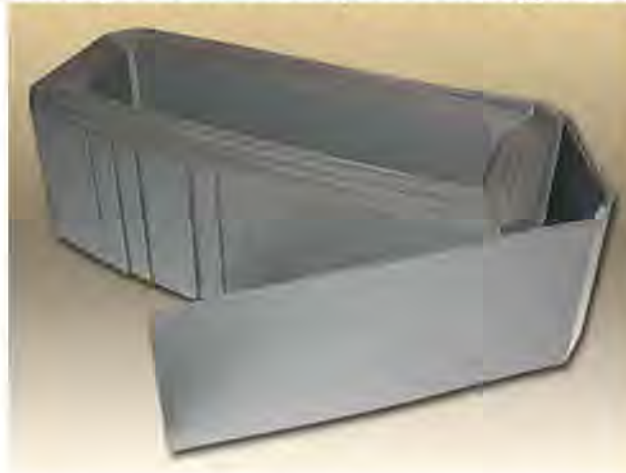
AEM UNICORE[®] MACHINERY

Transformer Cores and Machines

For General Purpose & Distribution Transformers (500 VA - 5000 kVA)

Distributed Gap Unicores[®]

The Low Loss, Accurate, Tooling Free Unicore



Applications

Core type, single leg and shell type, single & three phase distribution transformers.

DG Unicore Types

End-Overlap DG and Diverging DG. The position and specification of the DG face can be easily and accurately selected to suit your application.

Material

Any grade of GO, thickness 0.2 to 0.35 mm.

Annealing Information

Annealing reduces core loss by 5 to 30%, depending on Unicore size. For small cores annealing is desirable when the highest efficiency is required.

Special Features

Highly accurate manufacture results in consistent mass and low core loss.
Short runs and specials are manufactured easily.

Unicore Sizes

Dimension	Minimum (mm)	Maximum (mm)
Window Length (WL)	60	Unlimited*
Window Width (WW)	40	Unlimited*
Strip Width (SW)	20 (with 2 strips)	300/425 (with 1 strip)
Core Build Up (BU)	10	Unlimited*

*Not limited by the Unicore Machine. Limited only by practical transformer manufacturing considerations.

www.aemcores.com.au

AEM is the holder of multiple worldwide patents protecting its products and Intellectual Property.



AEM Cores Pty Ltd - T: +61 8 8341 0086 E: sales@aemcores.com.au W: www.aemcores.com.au